

# Update on COVID-19 Projections

Science Advisory and Modelling Consensus Tables

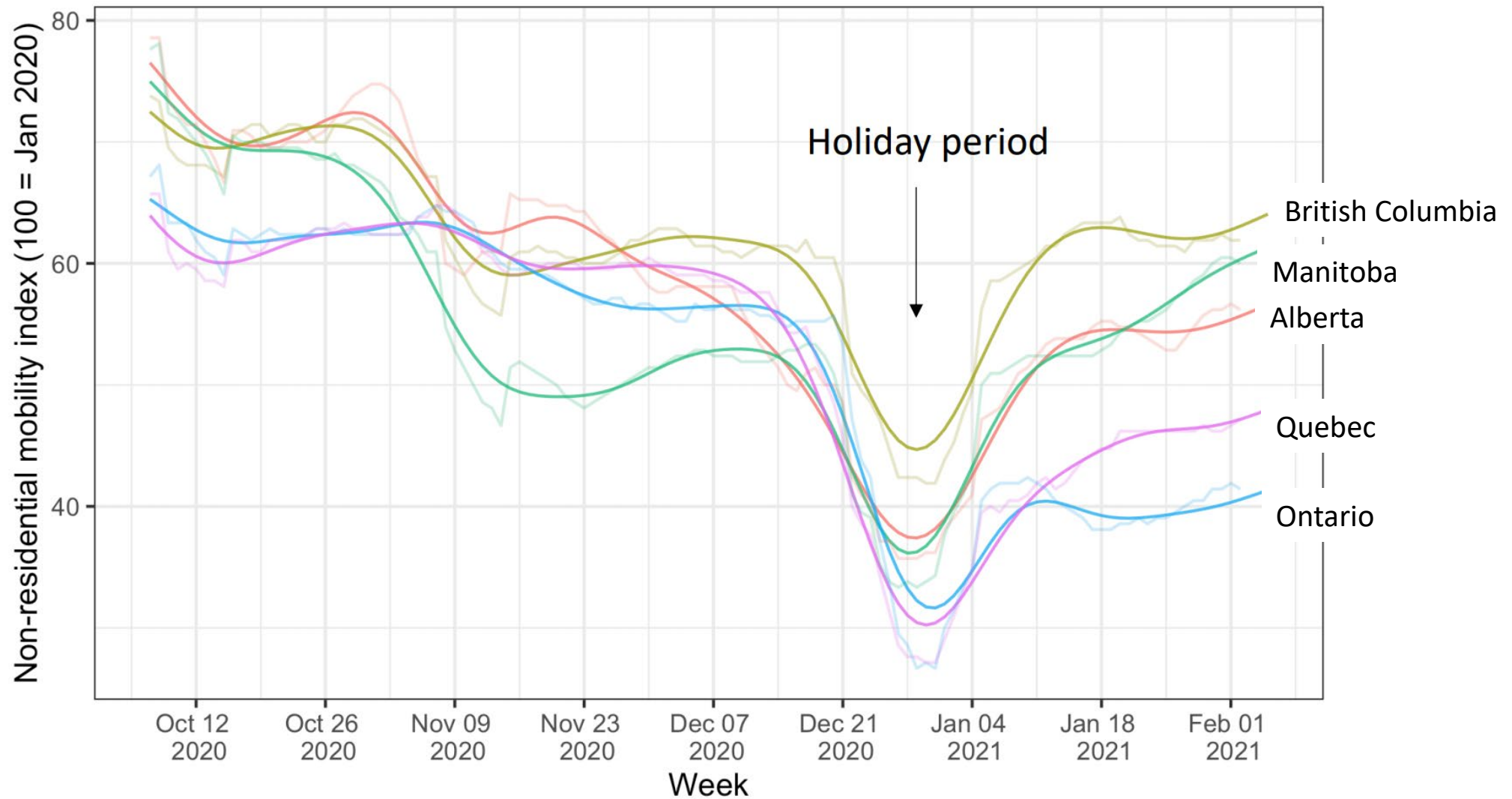
February 11, 2021



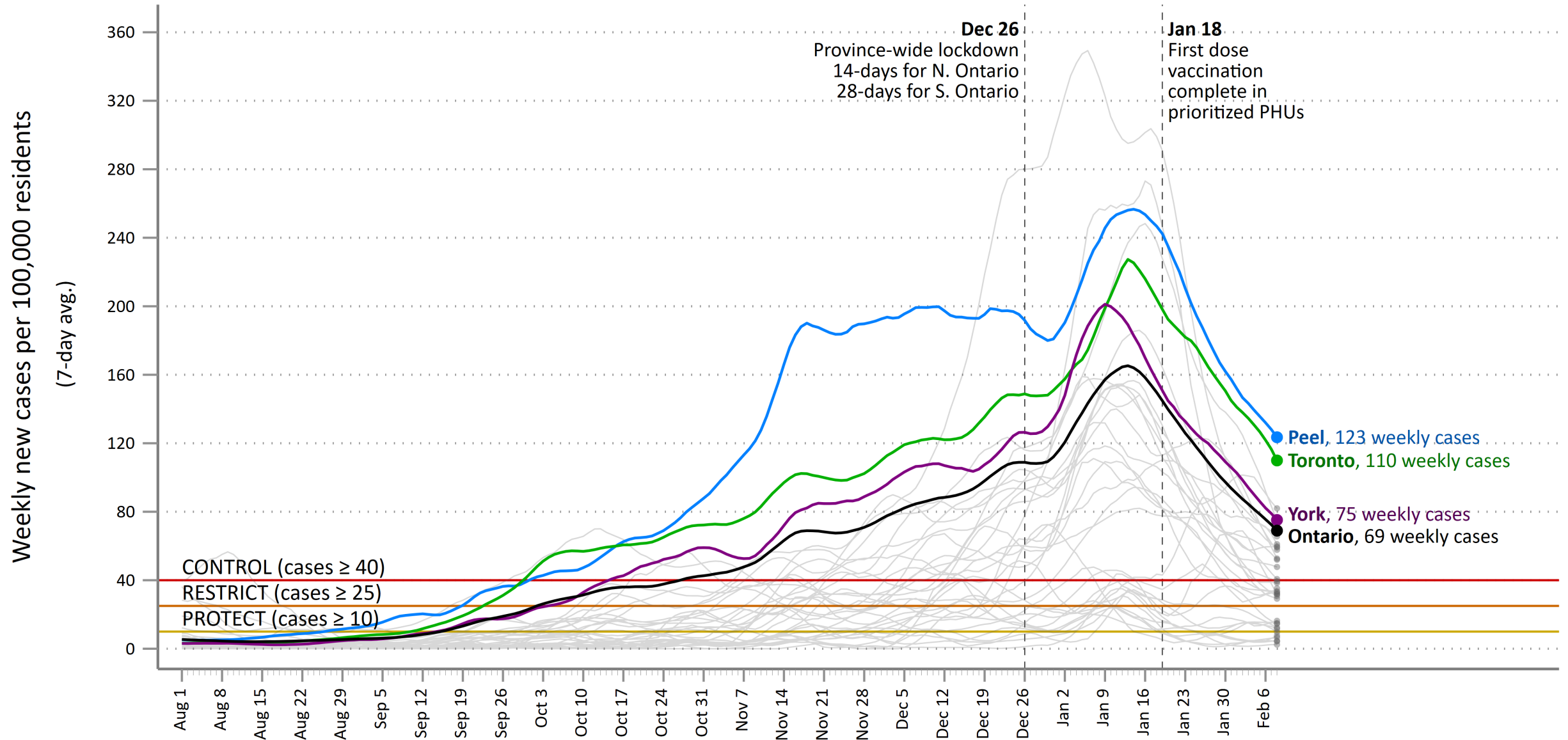
# Key Findings

- Public health measures are paying off in declining mobility, cases, positivity, and hospitalizations.
- Focussing vaccination on long-term care homes is paying off with declining daily deaths.
- ICU occupancy is flat and the access to care deficit continues to grow.
- The B.1.1.7 Variant of Concern is spreading. Cases will likely grow again in late February with ICU admissions increasing afterwards.
- Aggressive vaccination and sticking with stay-at-home order will help avoid a third wave and a third lockdown.
- Some key mental health indicators are unchanged. However, important measures such as emergency department admissions, opioid deaths and care for eating disorders are worsening.

# Declines in mobility have helped reduce cases

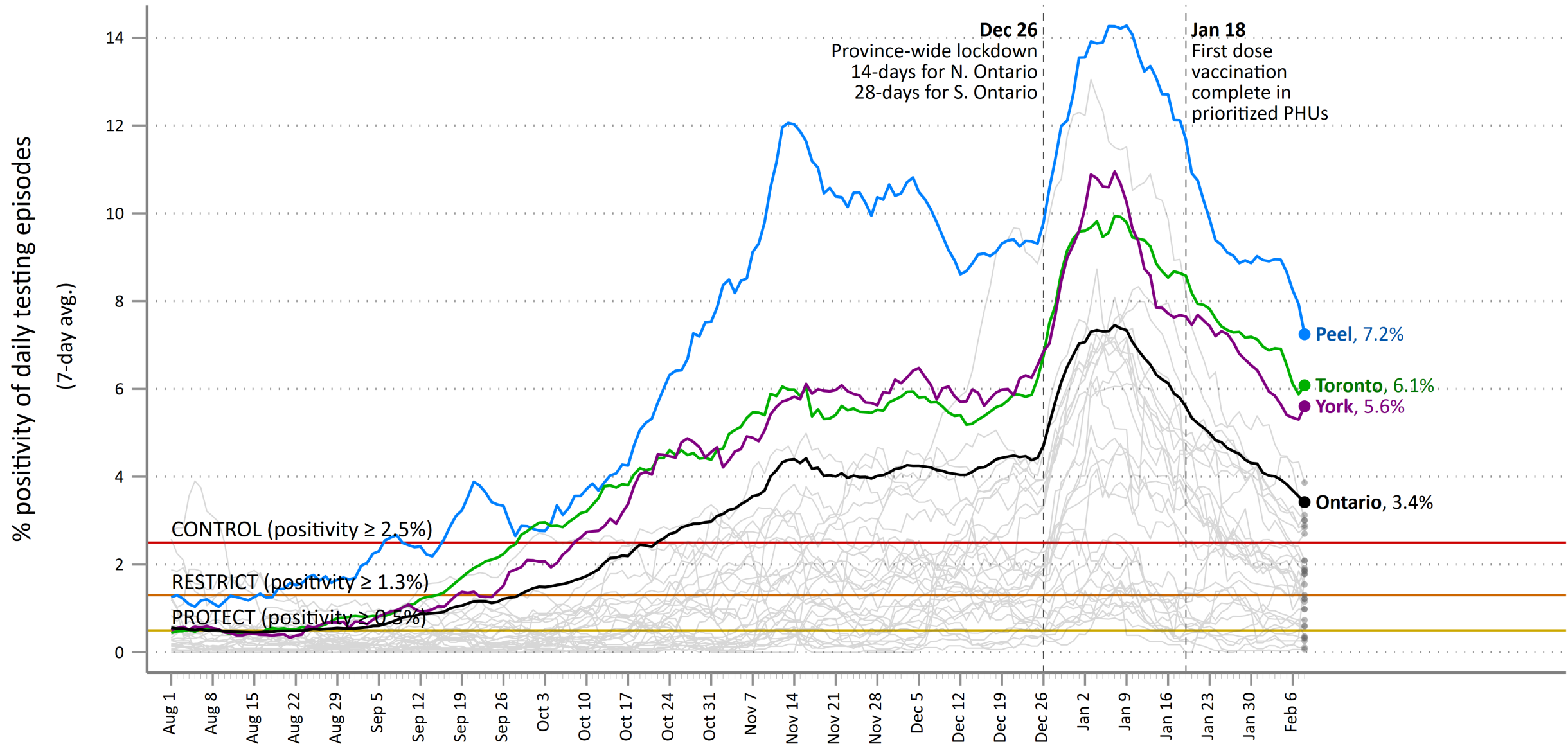


# Total new cases per 100,000 residents per week across PHUs



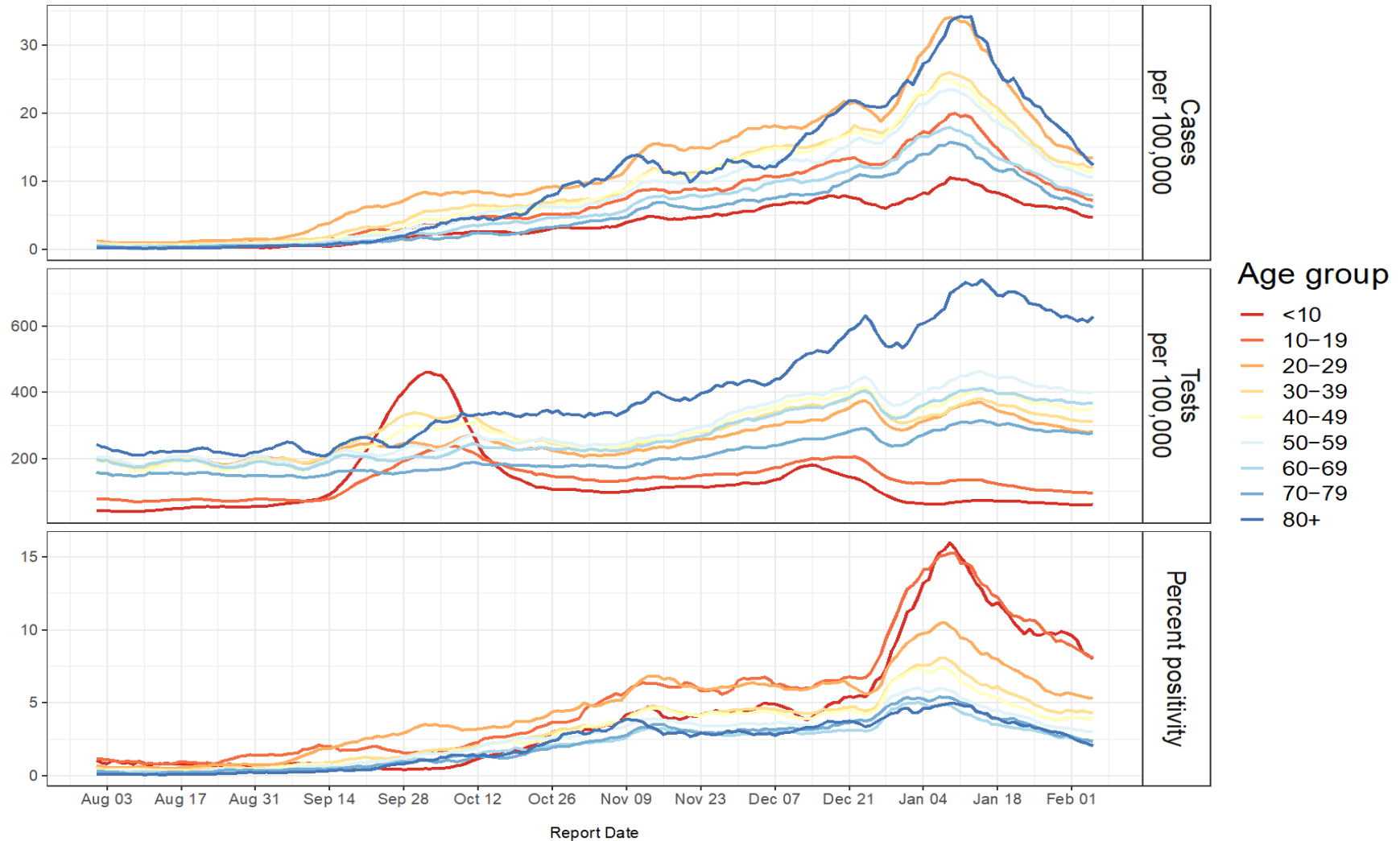
Data source: Case and Contact Management System (CCM), data up to February 8

# COVID-19 testing % positivity across PHUs



Data source: Ontario Laboratory Information System (OLIS), data up to February 8

# Cases and percent positivity declined across age groups.



# Cumulative COVID-19 vaccine dose administrations (426,834 doses to Feb 10, 2021)

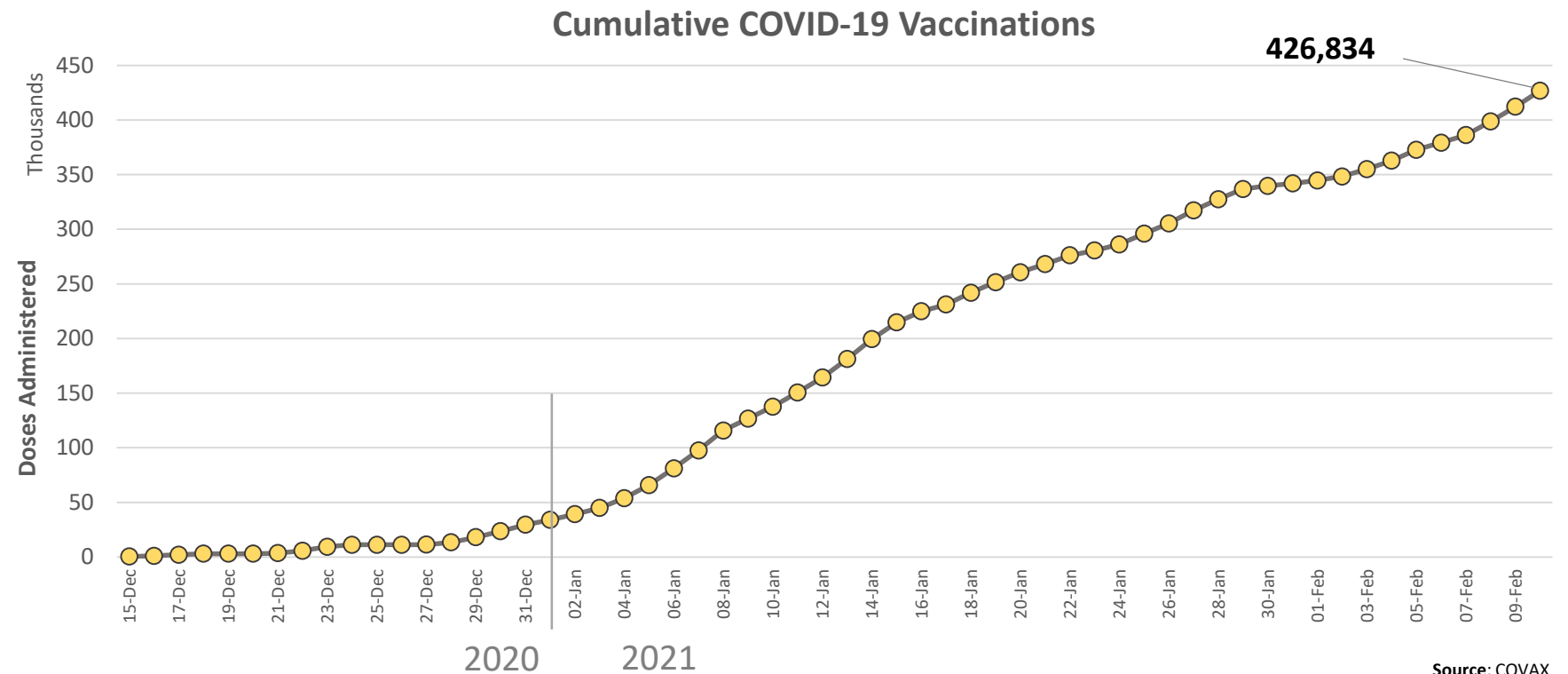
## Vaccine dose administrations

### Current status

Since December 15, 2020, 426,834 vaccine dose administrations have been reported in COVax.

These administrations include Pfizer and Moderna vaccines.

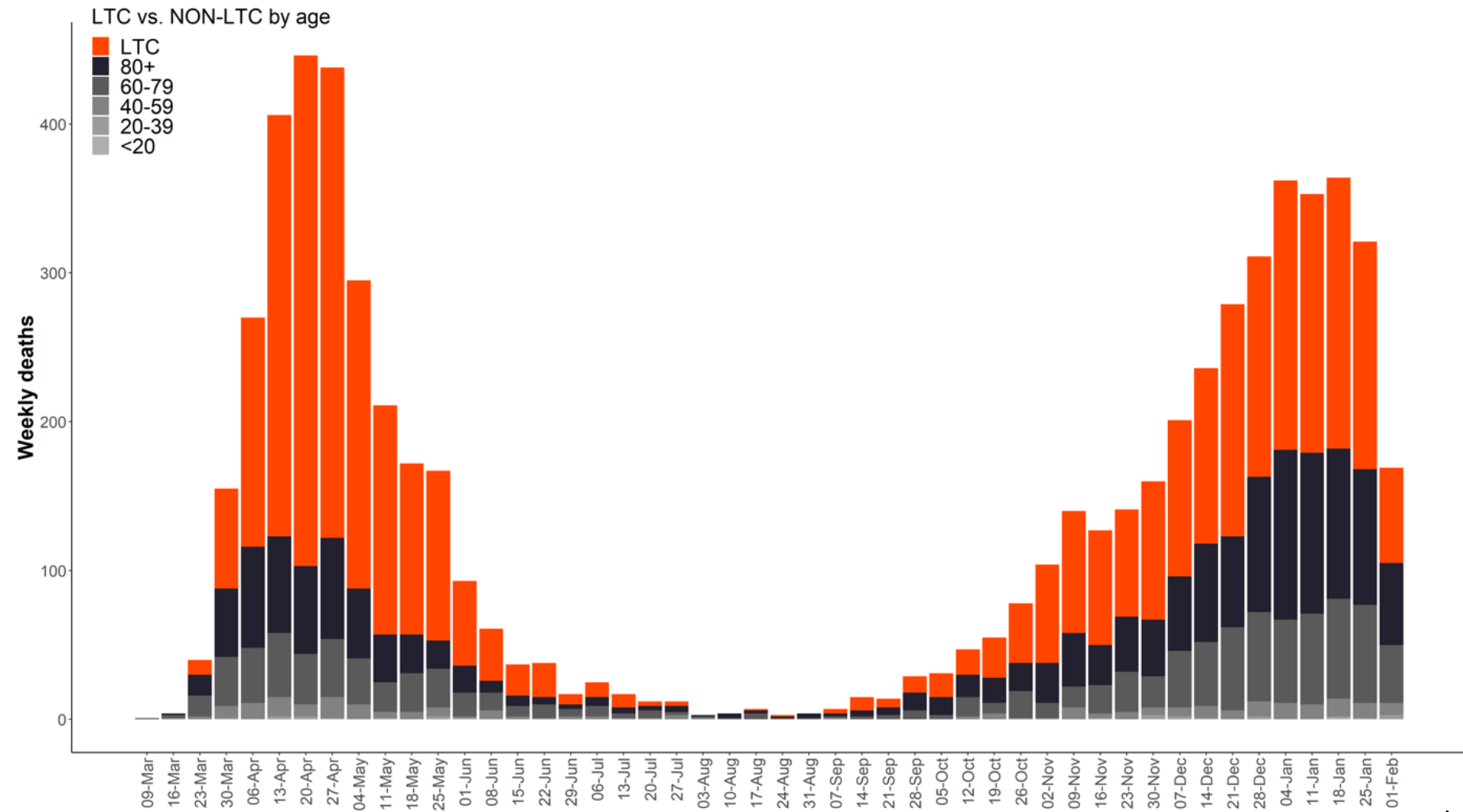
92% of vaccine administrations have been since Jan 1, 2021.



**Data Source:** COVax. Data to Jan 22nd extracted from COVax Dose Admin by Day Report. Jan 23rd-Feb 7th: COVax daily reports (Health Data Branch, MOH). Includes Pfizer and Moderna vaccines. Excludes records where status is not known.

# The majority of deaths arise from long-term care.

## COVID Deaths





# Long-term care key indicators improved.

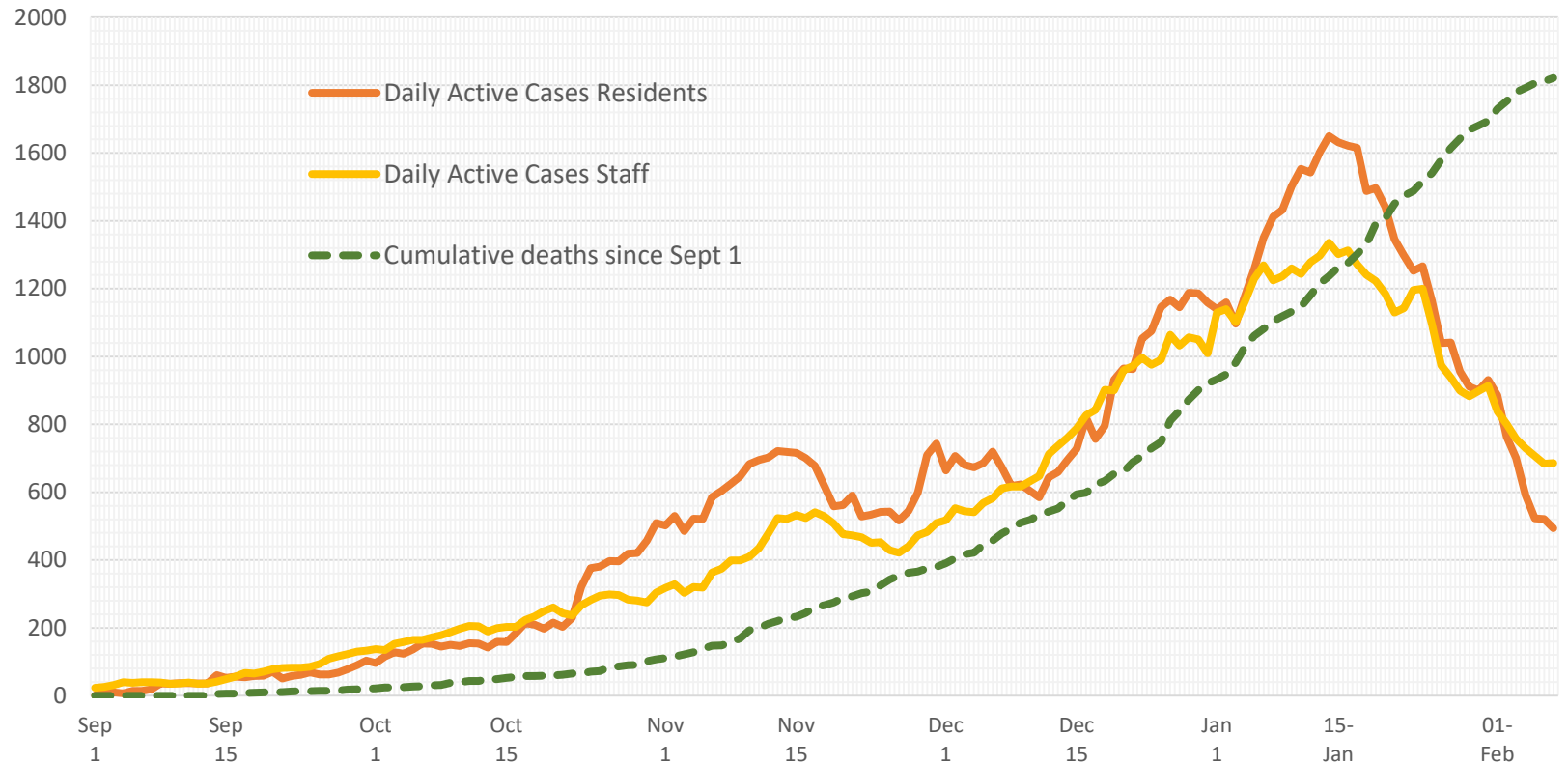
## Current status

**213 LTC homes have COVID-19 outbreaks (34% of all homes) with 90 outbreaks involving resident cases.**

**25 of 34 PHUs have at least 1 home in outbreak.**

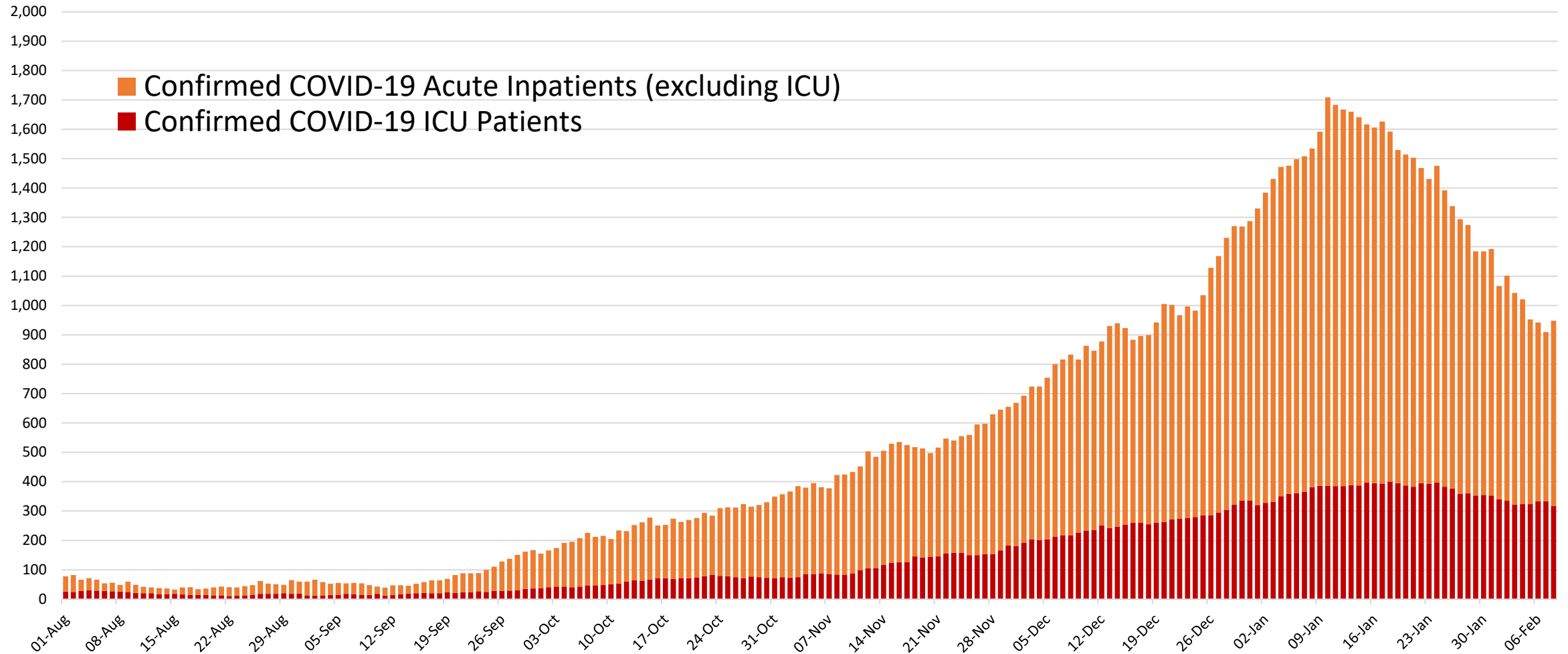
**Since January 1<sup>st</sup> 900 LTC residents and 3 staff have died of COVID-19. Wave 2 deaths (1,821) now roughly equal to Wave 1 (1,848).**

COVID-19 cases and deaths for LTC residents and staff



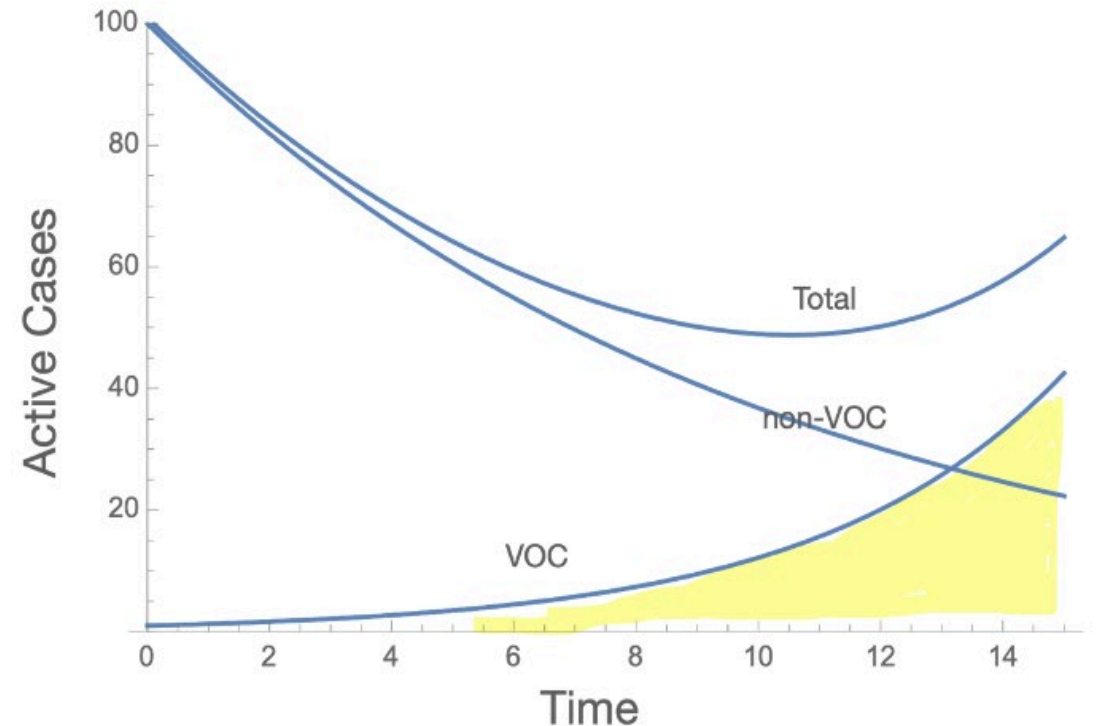
**Data Source:** Ministry of Long Term Care Tracker, Feb 8<sup>th</sup> extraction based on data reported up to 3:30 pm Feb 7<sup>th</sup>, 2021. Data are self-reported by the long-term care homes to the Ministry of Long-Term Care. Daily case and death figures may not immediately match the numbers posted by the local public health units (i.e. iPHIS database) due to lags in reporting time.

# Hospitalizations dropped and ICU occupancy stabilized.



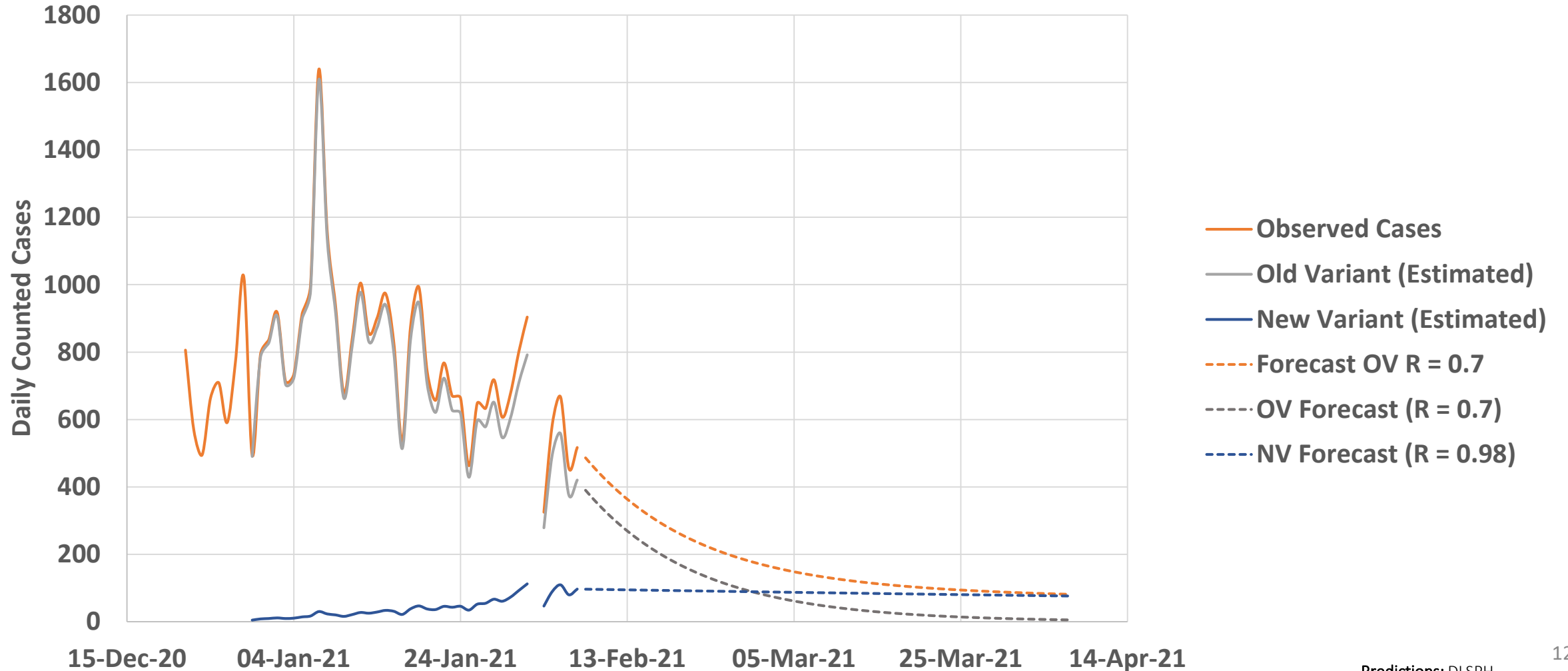
# The highly transmissible B.1.1.7 variant will soon dominate.

- Variants are likely between 5% and 10% of cases now.
- To prevent an increase in total cases  $R_e$  for B.1.1.7 needs to be below 0.7.
- Current  $R_e$  is between 0.8 and 0.9, it has only approached 0.7 once.
- Public Health Measures appear to be effective against all variants.
- First cases of B.1.351 (detected in South Africa) and P.1 (detected in Brazil) detected in Ontario.

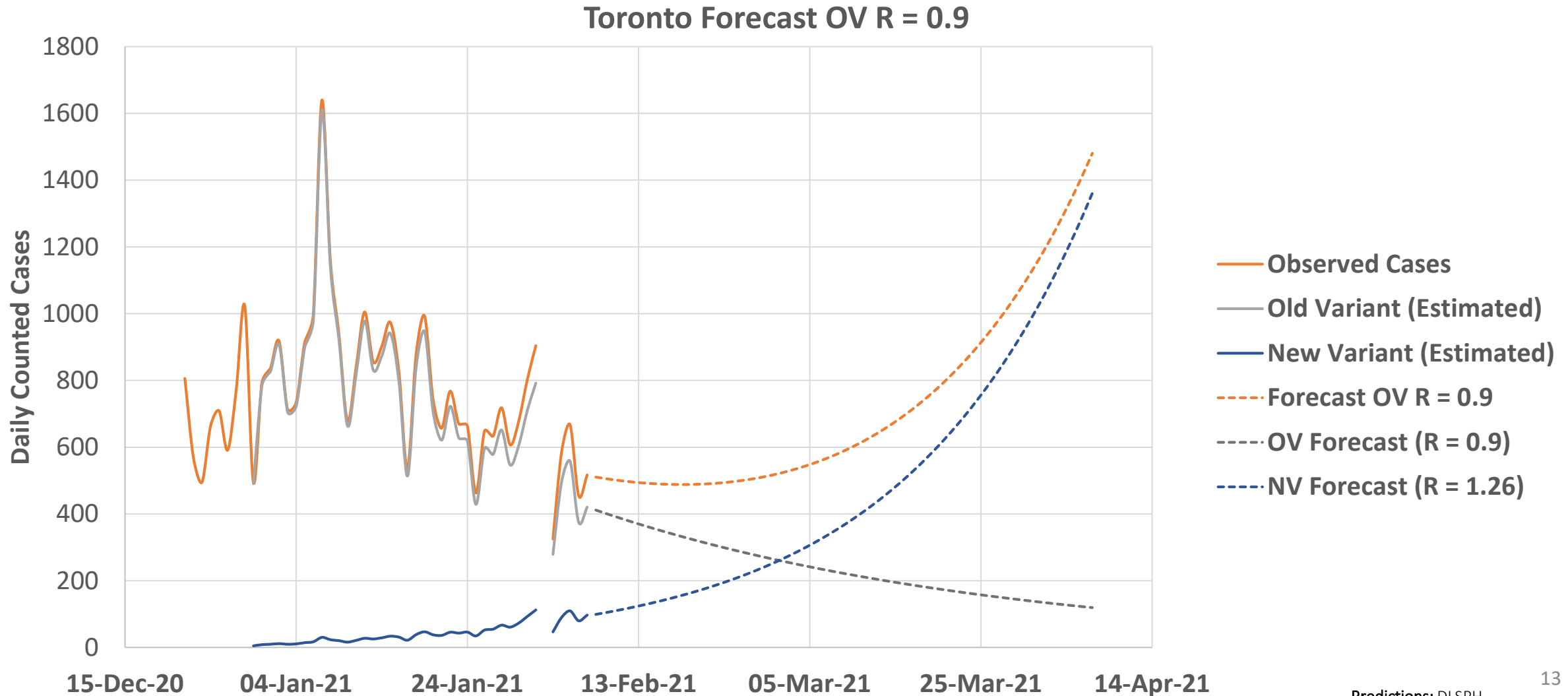


# To control growth with variants, we must push R to 0.7

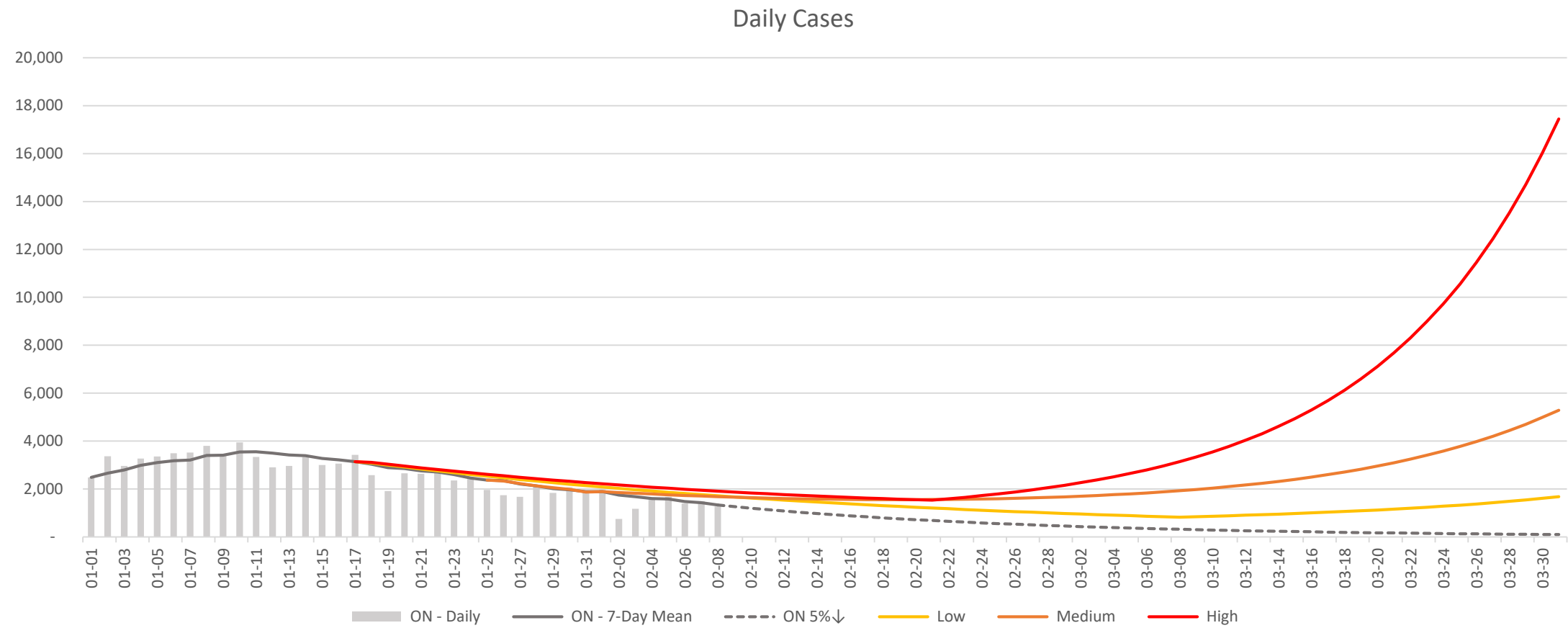
Toronto Forecast OV R = 0.7



# At $R=0.9$ (just above current) variant triggers exponential growth

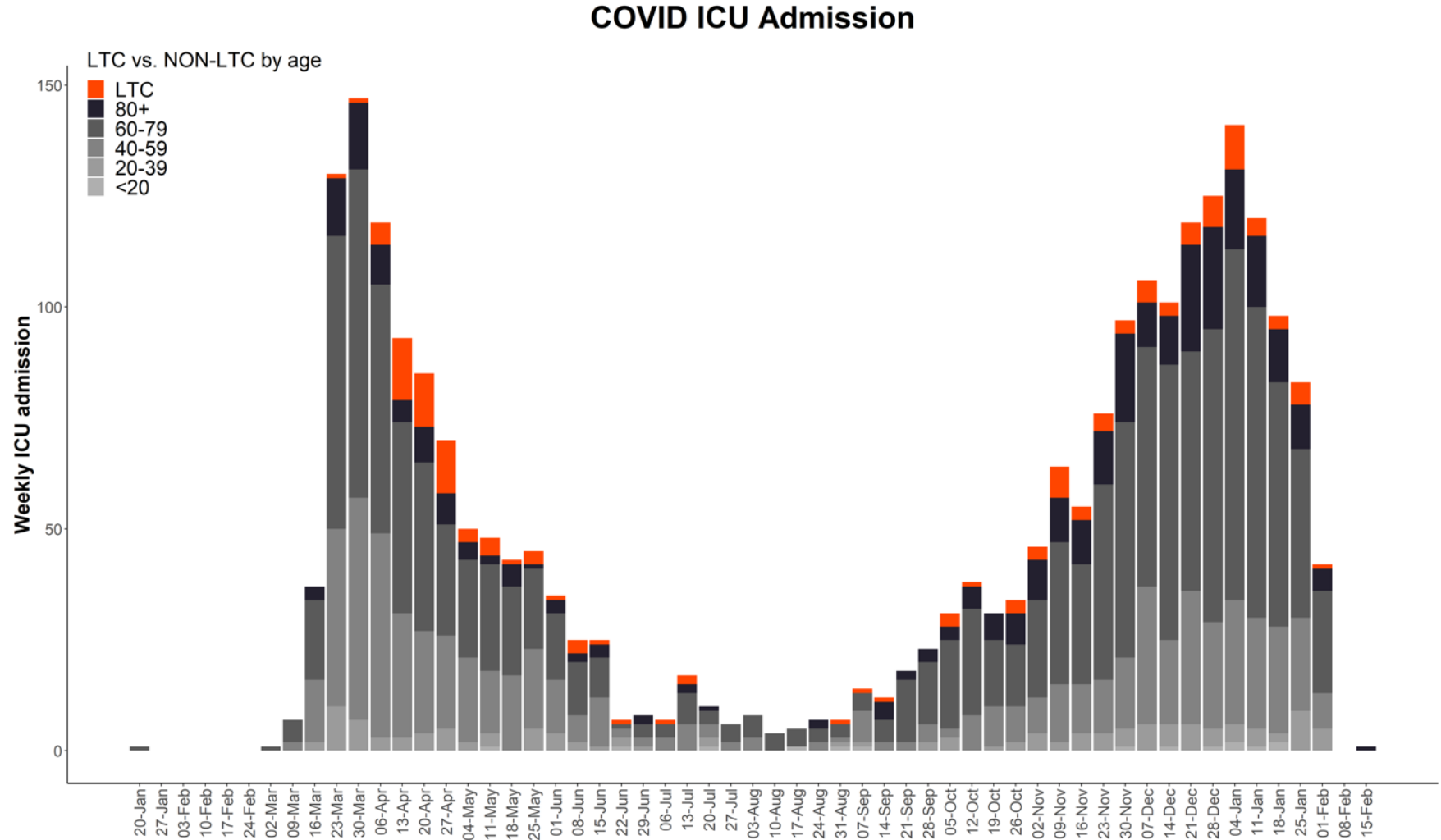


# If public health measures are lifted, cases could rise dramatically depending on spread of B.1.1.7.

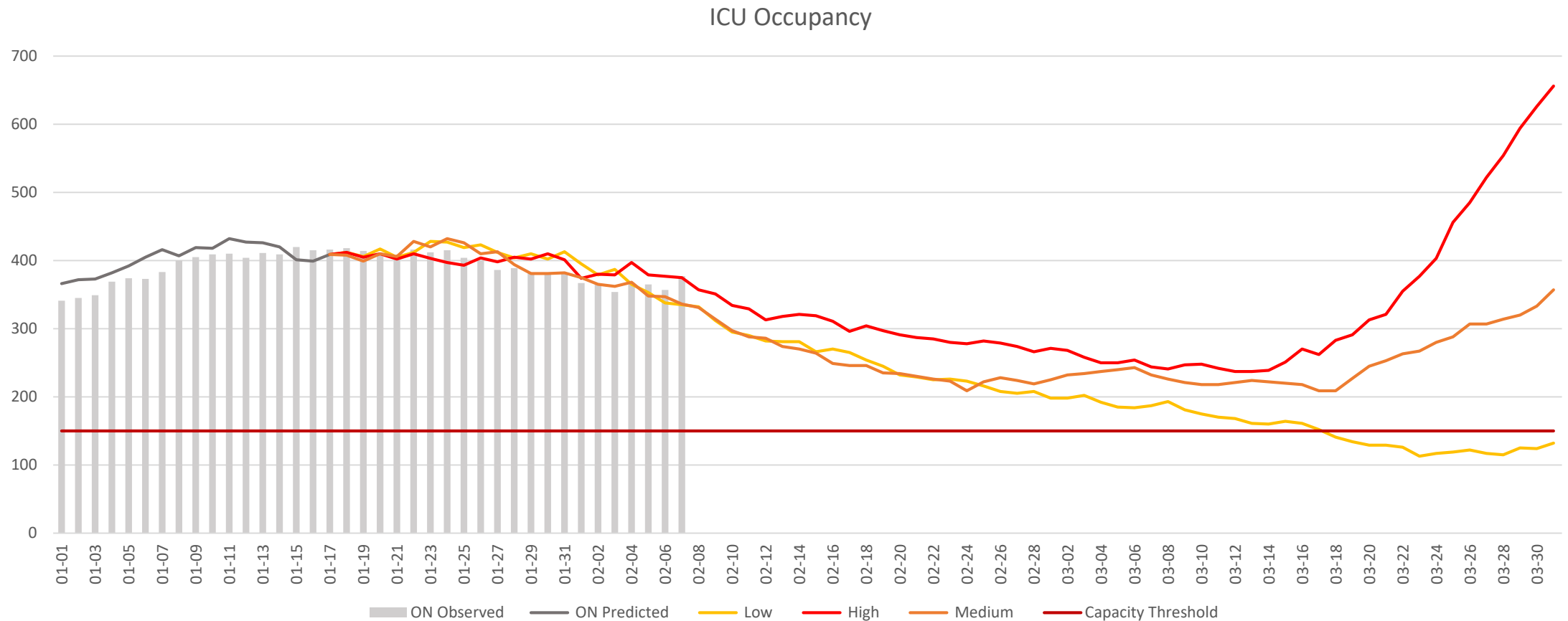


Predictions informed by modeling from COVID-19 ModCollab, McMasterU, QueensU, YorkU; recent decrease in new daily cases  
Data (Observed Cases): covid-19.ontario.ca

# The majority of ICU admissions arise outside of long-term care homes.

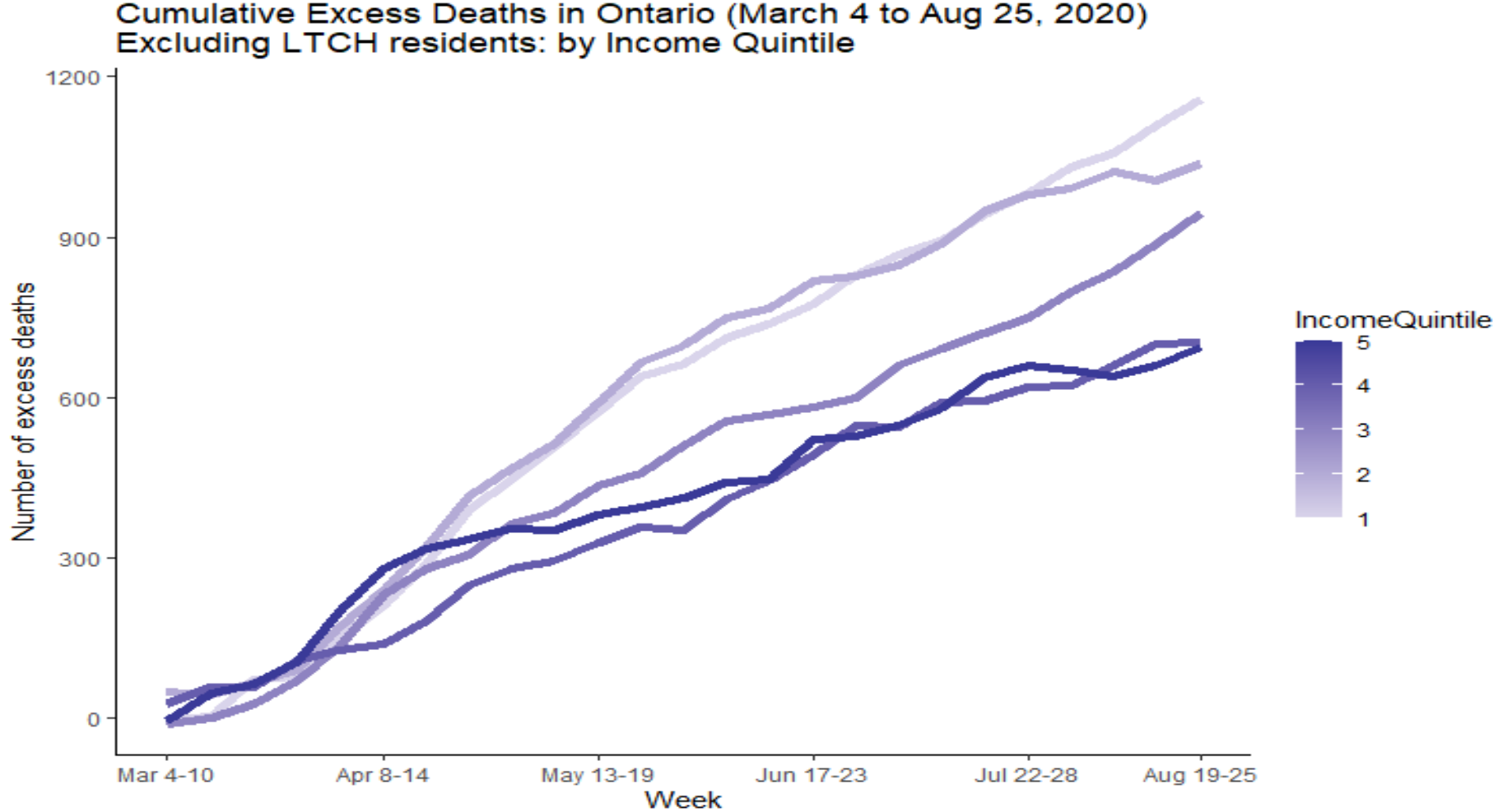


# ICU Occupancy will follow changes in case rates by two weeks. Growth could start as early as the second week in March.

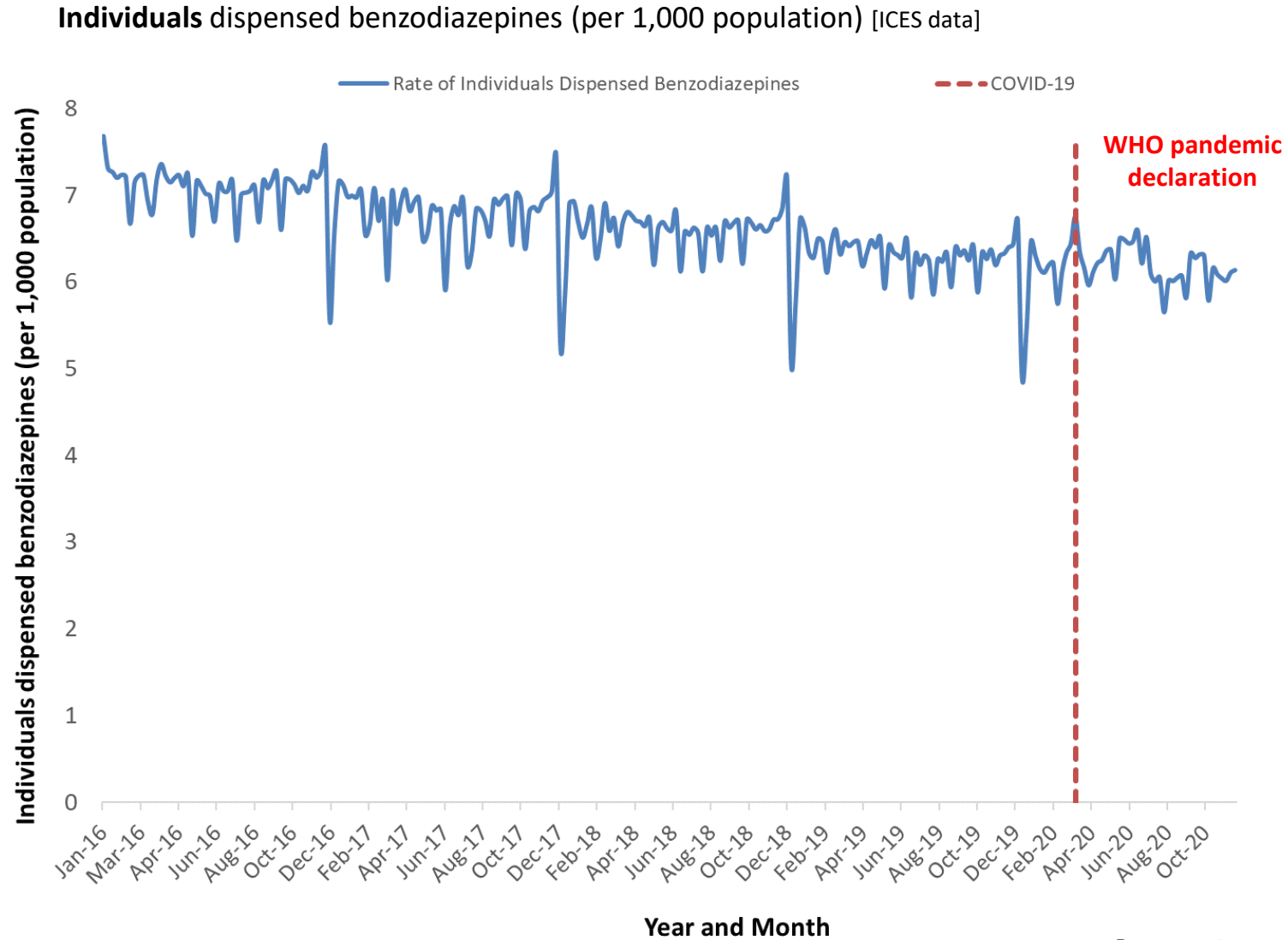




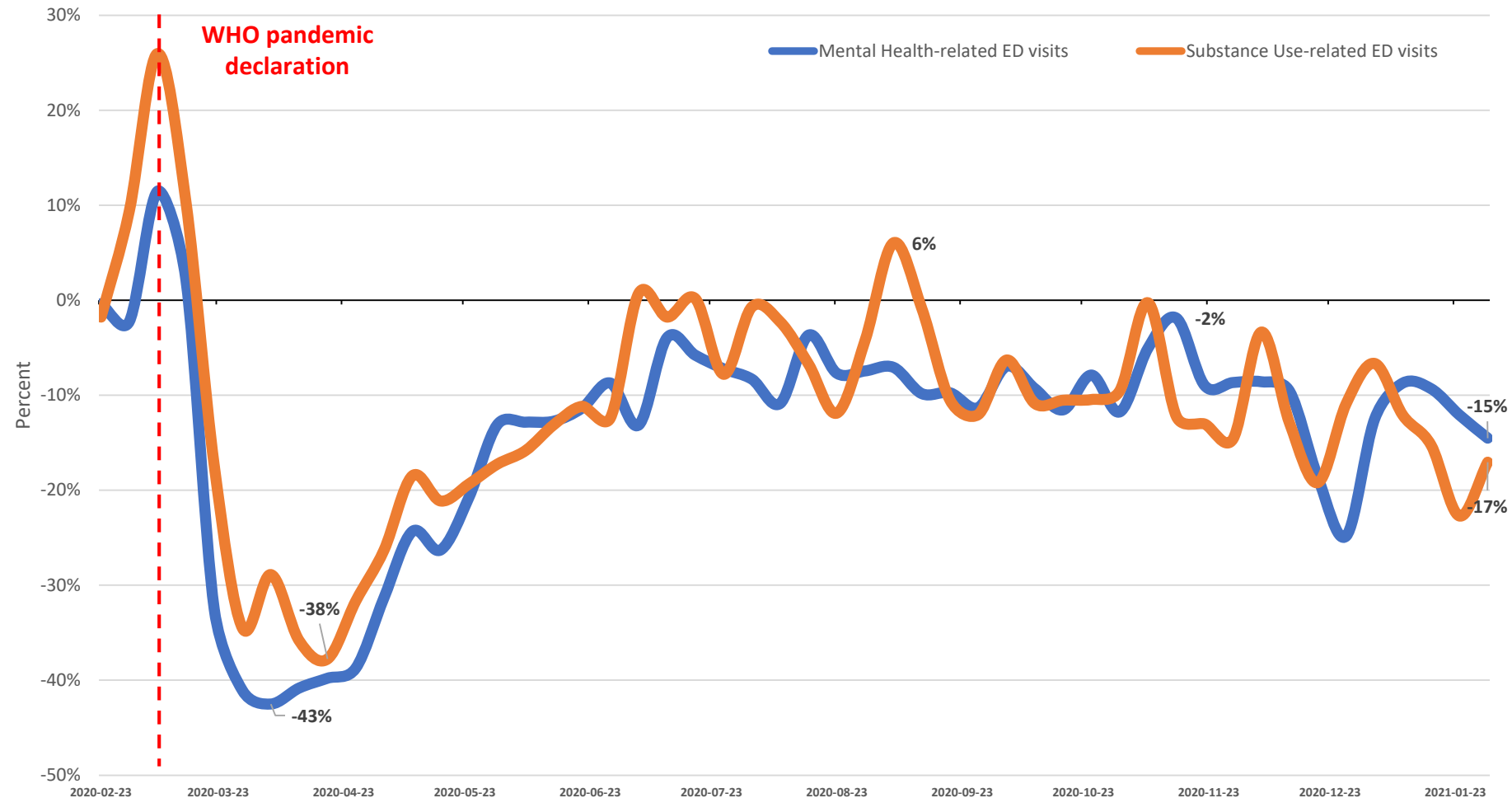
# The impact of the Pandemic has been inequitable and will continue to be inequitable



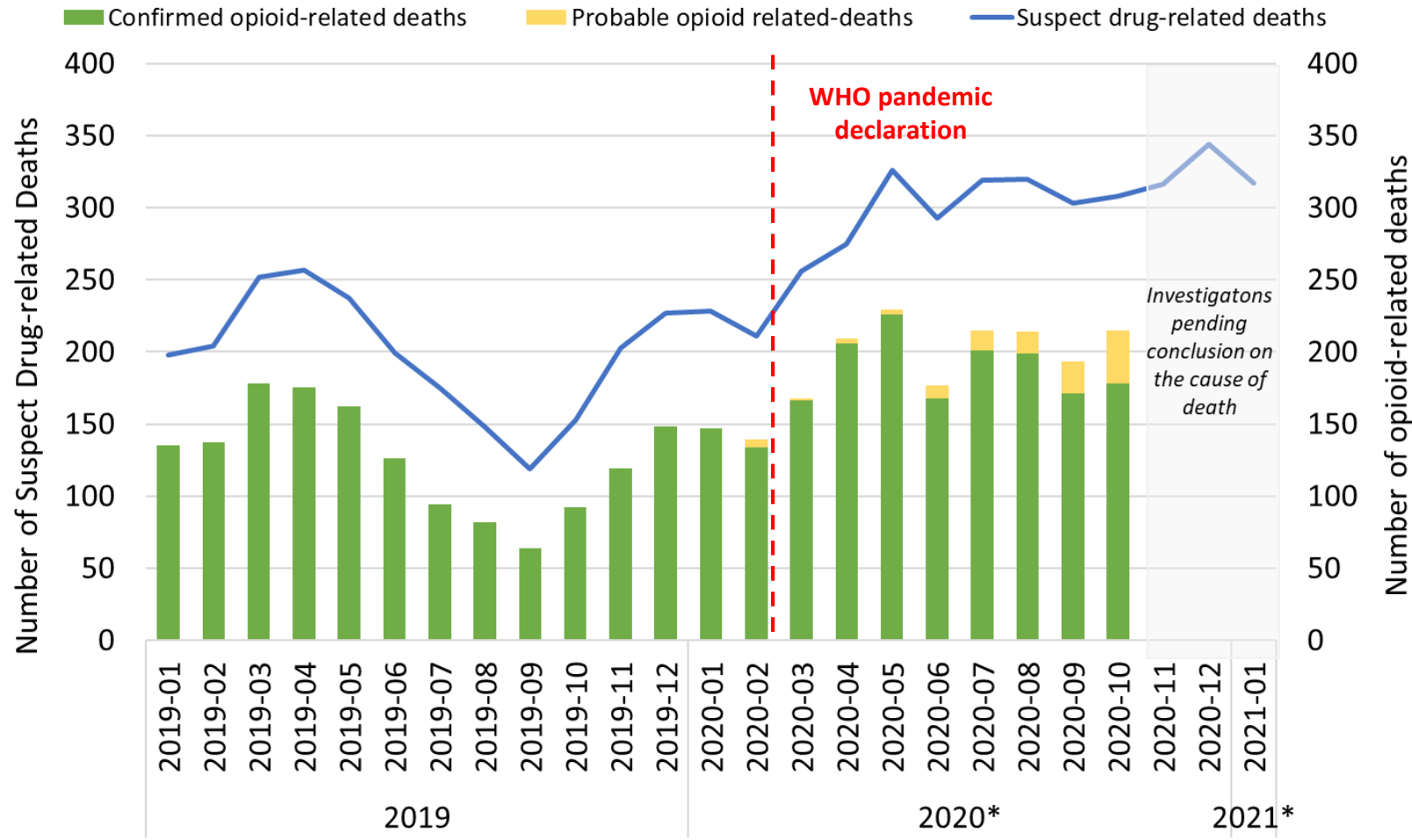
# Mental health medication dispensing has been stable



# Emergency department visits for mental health and addictions care have declined



# Overdose deaths have continued to climb

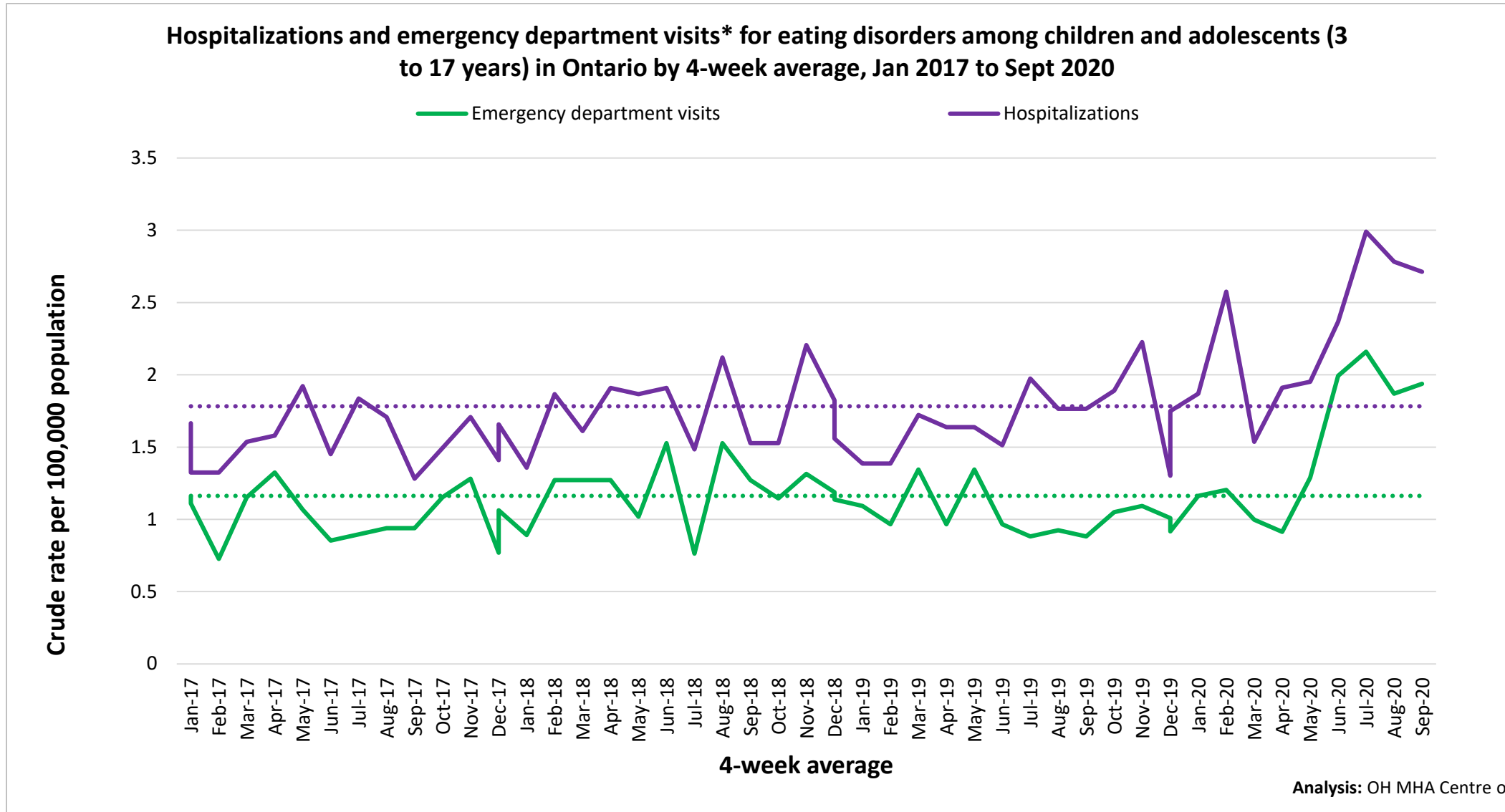


\*Preliminary and subject to change

**Notes:**

Data provided by the office of the Chief Coroner of Ontario (OCC); Suspect drug-related deaths are identified based on **preliminary information** reported by the investigating coroners to the office of the Chief Coroner of Ontario. It takes several months for these investigations to be completed and acute drug toxicity deaths to be confirmed; Opioid-related deaths includes confirmed and probable, and are considered **preliminary**; Once investigations are complete, acute opioid toxicity is typically deemed to be at least one of the substances directly contributing to about 65%-80% of suspected-drug related deaths (depending on the time period)

# Eating disorder visits and admissions have increased.



# Key Findings

- Public health measures are paying off in declining mobility, cases, positivity, and hospitalizations.
- Focussing vaccination on long-term care homes is paying off with declining daily deaths.
- ICU occupancy is flat and the access to care deficit continues to grow.
- The B.1.1.7 Variant of Concern is spreading. Cases will likely grow again in late February with ICU admissions increasing afterwards.
- Aggressive vaccination and sticking with stay-at-home order will help avoid a third wave and a third lockdown.
- Some key mental health indicators are unchanged. However, important measures such as emergency department admissions, opioid deaths and care for eating disorders are worsening.

# Contributors

- **COVID Heterogeneity Research Group:** Rafal Kustra, Huiting Ma, Siyi Wang, Gary Moloney, Kristy Yiu, Beate Sander, Jeff Kwong, Stefan Baral, Sharmistha Mishra
- **COVID-19 Modeling Collaborative:** Kali Barrett, Stephen Mac, David Naimark, Aysegul Erman, Yasin Khan, Raphael Ximenes, Sharmistha Mishra, Beate Sander
- **DLSPH:** Ashleigh Tuite, David Fisman
- **Fields Institute:** Kumar Murty
- **QueensU:** Troy Day
- **McMasterU:** Michael Li, Irena Papst, Ben Bolker, Jonathan Dushoff, David Earn
- **YorkU:** Jianhong Wu, Francesca Scarabel, Bushra Majeed
- **MOHLTC:** Michael Hillmer, Kamil Malenvov, Qing Huang, Jagadish Rangrej, Nam Bains, Jennifer Bridge
- **OH:** Erik Hellsten, Stephen Petersen, Anna Lambrinos, Chris Lau, Access to Care Team, Michelle Rossi, Paul Kurdyak (also DLSPH and CAMH)
- **ODPRN:** Tara Gomes
- **PHO:** Sarah Buchan, Kevin Brown

# Content provided by Modelling Consensus and Scientific Advisory Table members and secretariat

Beate Sander,\* Peter Juni, Brian Schwartz,\* Kumar Murty,\* Upton Allen, Vanessa Allen, Nicholas Bodmer, Isaac Bogoch, Kevin Brown, Sarah Buchan, Yoojin Choi, Troy Day, David Earn, Gerald Evans, David Fisman, Jennifer Gibson, Anna Greenberg, Anne Hayes, Michael Hillmer, Jessica Hopkins, Jeff Kwong, Audrey Laporte, John Lavis, Gerald Lebovic, Brian Lewis, Linda Mah, Kamil Malikov, Antonina Maltsev, Doug Manuel, Allison McGeer, David McKeown, John McLaughlin, Sharmistha Mishra, Justin Morgenstern, Samira Mubareka, Laveena Munshi, Christopher Mushquash, Ayodele Odutayo, Shahla Oskoei, Samir Patel, Bill Praamsma, Justin Presseau, Fahad Razak, Rob Reid, Paula Rochon, Laura Rosella, Arjumand Siddiqi, Chris Simpson, Arthur Slutsky, Janet Smylie, Nathan Stall, Ashleigh Tuite, Jennifer Walker, Tania Watts, Ashini Weerasinghe, Scott Weese, Xiaolin Wei, Jianhong Wu, Diana Yan, Emre Yurga

\* Chairs of Scientific Advisory or Modelling Consensus Tables